

SKF CR Seals® support rotating shaft machinery and are known for their outstanding performance in many industries. As an SKF Seals Distributor, Zatkoff offers catalog and custom radial shaft seals, and provides design and development support for a variety of unique applications.

VALUE PROPOSITION

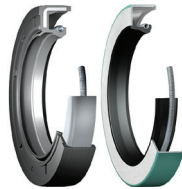
- Comprehensive line of catalog parts in a variety of materials
- Custom sealing solutions also available
- Coordinated engineering support with SKF
- Proprietary tools and dedicated testing

RADIAL SHAFT SEALS

SKF Wave & SKF Edge

Oil Applications

SKF Wave seals feature lips molded in a sinusoidal wave pattern onto a case with a metal OD. SKF Edge seals feature a rubber OD, specially designed seal lips, and meet ISO and DIN standards. They are known as a trusted, robust solution across industries.



HM Seals

Grease Applications

For decades, engineers have trusted the HM series grease seals to divert contamination away from critical bearings. HM seals are designed to withstand a grease purge when the lip is pointing toward the air side.



SKF Flex Seals

Heavy Industrial Applications

This range includes heavy-duty, metal-cased seals and all rubber seals. SKF Flex seals can be quickly customized to accommodate virtually any shaft and bore size over 4 in (100 mm).



Cassette Seals

Oil Applications

SKF Scotseals feature a multi-lip seal, an integrated wear sleeve, and high-performance elastomeric materials. Our advanced SKF Wave lip technology is used for all SKF Scotseals.



AXIAL SHAFT SEALS

V-Ring Seals

V-ring seals from SKF are an easy-to-install solution for rotating shaft applications, including for uses as a secondary seal in highly-contaminated environments.



Metal Faced Seals

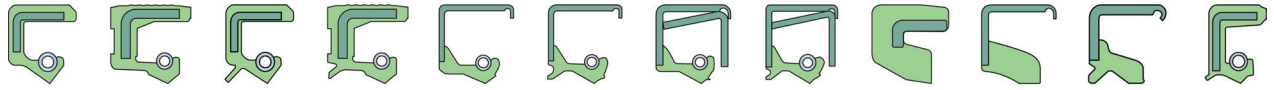
Originally designed for low speeds and severe conditions that affect off-road and tracked vehicles, SKF metal face seals have proven equally suitable for applications exposed to sand, soil, mud, water, and more.



Axial Excluder Seals

The CT1 axial seal is a split seal that can be clamped to a housing. The sealing lip runs on a rotating face and excludes contaminants. These seals can be cut to any size from 6 in (152 mm) to over 300 in (7620 mm).





CR Seals®	HMS4	HMS5	HMSA7	HMSA10	CRW1	CRWA1	CRWH1	CRWHA1	HM4	HM14	HMA1	HMS7P2
Other Industry Standards	SC		TC		SB	TB	SA	TA	VC	VB	KB	—
	35		32		48	47, 69	45	41	34	44	49	—
	BA		BASL		B1	B1SL	B2	B2SL	BAOF	B1OF	—	BABSL
	A		ADL		B	BDL	C	CDL	AO	BO	BODL	—
	92		94		48	78	68	—	91	71	—	—
	WA		WAS		WB	WBS	WC	WCS	WAO	WBO	—	WASY
	TRA		TRE		TRC	TRD	TRB	TRF	TRK	TRG	—	TRP

The comparison data is for informational purposes only. Zatkoff Seals & Packings makes no warranties of any kind with respect to the data, and such data is always subject to change. Customers are encouraged to compare, verify, and obtain the most accurate information.

MATERIALS MATRIX

Material / Abbreviation		SKF Trade Name	Material Code	Operating Temperature	Relative Wear Resistance	Fluid Compatibility	Fluids to Avoid
Nitrile Rubber	NBR	—	R or RG	-40 to 210°F -40 to 100°C	4	Petroleum or silicone-based oils and greases, fuels, vegetable oils, warm water	Brake fluids, ammonia, amines, aliphatic or chlorinated hydrocarbons, phosphate ester fluids, polar solvents (ketones, acetones, MEK)
Carboxylated Nitrile	XNBR	Duralip	D	-40 to 210°F -40 to 100°C	7		
Hydrogenated Nitrile	HNBR	Duratemp	H	-40 to 302°F -40 to 150°C	7		
Fluorocarbon Rubber	FKM	Duralife	V	-5 to 390°F -20 to 200°C	8	Oils, fuels, mineral acids, aliphatics, aromatic hydrocarbons	Esters, ethers, ketones, amines, hot anhydrous hydrofluorides, MEK
Polyacrylate Elastomer	ACM	—	P	-40 to 300+°F -40 to 150+°C	2	Fluids with EP additives, ozone	Water, acids, alkalis Do not run dry
Filled Polytetrafluoroethylene	PTFE	—	T	-90 to 480°F -70 to 250°C	10	Nearly all fluids	Rare fluids: fluorine, diethylamine

For more information, contact your local Zatkoff representative or visit our website.